

TEKNOFLOR®

HIGH PERFORMANCE FLOORING



AN HMTX COMMERCIAL PRODUCT

ELEVATED CLASSICS™ HPD

COMMERCIAL LUXURY RESILIENT SHEET • HIGH PERFORMANCE DESIGN

CLASS AND COORDINATION

Teknoflor's Elevated Classics HPD Collection offers the timeless beauty of classic textiles with a modern upscale twist. Inspired and engineered to elevate Teknoflor's favorite visuals, the collection embodies the brand's trademark of high performance design with every sku. The Elevated Classics HPD Collection of resilient sheet flooring's no wax, no buff construction, along with a 12-Year Limited Commercial Warranty, ensures that your floor is as durable as it is beautiful.



DURABLE AND LOW MAINTENANCE

- No Wax, No Buff and no sealers or finishes needed; easily cleaned by damp mopping or auto-scrubbing
- 2.3 mm gauge for enhanced performance in heavy traffic areas

ENVIRONMENTALLY FRIENDLY

- No buff floors mean no bacteria, dust or wax particles are thrown into the air during cleaning
- No odors from adhesives, finish or strippers; no wax flushed into sewer system
- Complies with REACH requirements for Substances of Very High Concern
- No antimicrobial agents added
- Made with 100% Virgin Vinyl
- FloorScore® Certified

SAFE

- ADA Compliant
- Compliant for emergency egress areas - NFPA 101

OVERALL THICKNESS

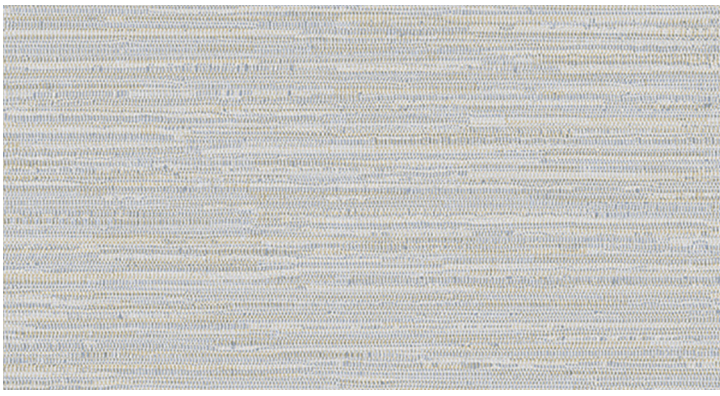
- 2.3 mm overall thickness

WARRANTY

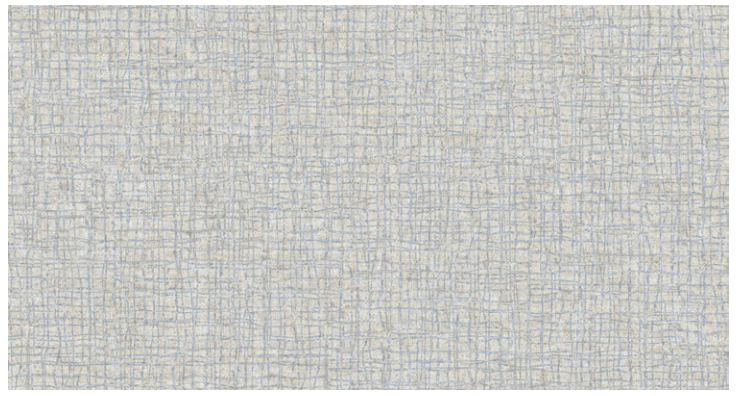
- 12-Year Limited Commercial Warranty

APPLICATIONS

- Ideal for Healthcare, Senior Living, Retail, Corporate/Office, Hospitality, Academic and Educational Environments



INTERLINE
90104 SILKY SKIES



TRELLIS
90204 CHIC CASHMERE



INTERLINE
90102 SOFT COTTON



TRELLIS
90202 CALMING CAMEL



INTERLINE
90103 NEW NEUTRAL



TRELLIS
90203 DESERT SAND



INTERLINE
90101 VINTAGE WOOL



TRELLIS
90201 SAND STONE

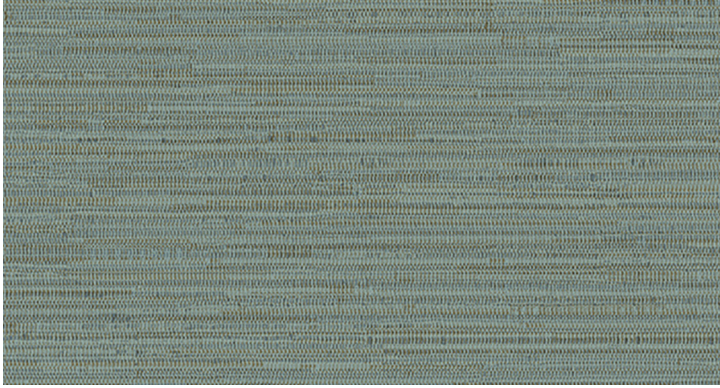
NOTE: Digital representation may differ from physical samples.



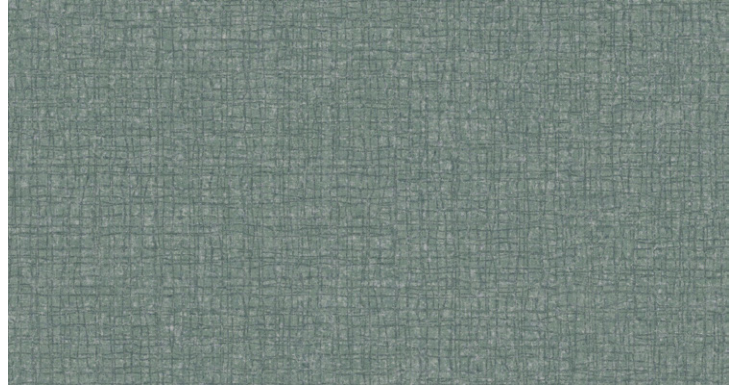
INTERLINE
90106 SILK SATIN



TRELLIS
90206 NEW WOOL



INTERLINE
90107 GROUNDED



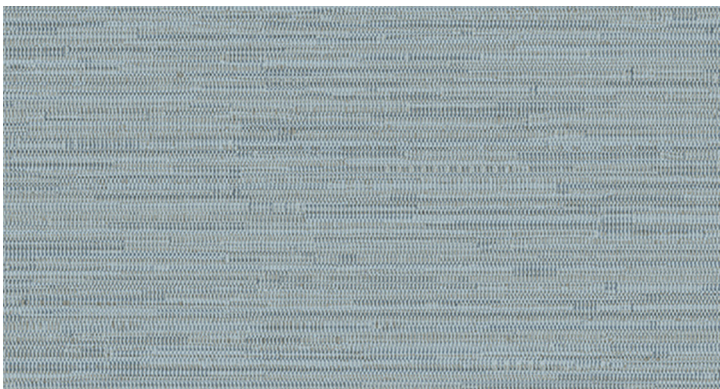
TRELLIS
90207 WARM WOOL



INTERLINE
90105 CLASSIC LINEN



TRELLIS
90205 ELEVATED SILK



INTERLINE
90108 CHILLED SILK



TRELLIS
90208 SERENITY

NOTE: Digital representation may differ from physical samples.

TEKNOFLOR® ELEVATED CLASSICS™ HPD

COMMERCIAL LUXURY RESILIENT SHEET • HIGH PERFORMANCE DESIGN

| PHYSICAL PROPERTIES & PACKAGING (HETEROGENEOUS SHEET VINYL - 2.3 MM GAUGE / 20 MIL WEAR LAYER) | |
|--|--|
| Construction | Heterogeneous Sheet Vinyl Flooring |
| Classification (ASTM F1303) | Type I, Grade 1, Class A |
| Use | Commercial |
| Thickness - Overall | 2.3 mm (0.091") |
| Thickness - Wear Layer | 0.5 mm (20 mil) |
| Finish | HP Urethane with Ceramic Bead |
| Size - Roll (W x L) | 6' x 75' (1.829 m x 22.86 m) |
| Coverage - Roll | 450 sq. ft. (50 sq yd. / 41.81 sq. m.) |
| Coverage - Pallet | 12 Rolls/Pallet (5,400 sq ft. / 600 sq yd. / 501.7 sq. m.) |
| Coverage - Container | 10 Pallets/Container (54,000 sq ft. / 6,000 sq yd. / 5,017 sq. m.) |
| Limited Warranty | 12-Year Commercial |

| STANDARDS - MANUFACTURING & USAGE (ASTM F1303) | | | |
|--|----------------------|---|---------------------------------|
| STANDARD | DESCRIPTION | REQUIREMENTS | RESULTS |
| ASTM F410 | Wear Layer Thickness | Type I, Grade 1 ≥ 0.020 in. | Passes Requirements |
| ASTM F137 | Flexibility | Type I: No cracks/breaks (0.25 in. Mandrel) | Passes Requirements |
| ASTM F1914 | Residual Indentation | Type I: ≤ 0.012 in. | Passes Requirements |
| ASTM F970 | Static Load Limit | Commercial: ≥ 175 psi at 0.005 in. | Passes (1,500 psi at 0.005 in.) |
| ASTM F925 | Chemical Resistance | No more than "Slight Change" | Passes Requirements |
| ASTM F1514 | Resistance to Heat | Average $\Delta E \leq 8.0$ | Passes Requirements |
| ASTM F1515 | Resistance to Light | Average $\Delta E \leq 8.0$ | Passes Requirements |

| STANDARDS - SAFETY & PERFORMANCE | | | |
|----------------------------------|---|---|----------------------------------|
| STANDARD | DESCRIPTION | REQUIREMENTS | RESULTS |
| ASTM E648 | Critical Radiant Flux (Radiant Panel) | Class I: ≥ 0.45 W/cm ² | Passes Requirements ¹ |
| ASTM E662 | Smoke Density | Flaming & Non-Flaming ≤ 450 | Passes Requirements ² |
| REACH SVHC 235 | Substance of Very High Concern | $\leq 0.1\%$ per Substance | Passes Requirements |
| ASTM F963 | Heavy Metals | Refer to Standard (Table I) | Passes Requirements |
| CPS-CH-C1001-09.4 | Phthalates | Per CPSIA ³ $\leq 0.1\%$ per Substance | Passes Requirements |
| ASTM G21 | Antifungal Activity | N/A (No Official Requirements) | Top Surface: 0 (No Growth) |
| ASTM D2047 | Coefficient of Friction/Slip Resistance | N/A (No Official Requirements) | ≥ 0.6 (Dry) |
| ANSI/ESD STM97.2 | Body Voltage | N/A (No Official Requirements) | Average (Absolute) ≤ 2.0 kV |
| ASTM D4060 | Abrasion Resistance | N/A (No Official Requirements) | 42,000 cycles |

SCAN THE QR CODE below to download all technical documents or visit: www.HMTXcommercial.com/technical-teknoflor



NOTES:

1. ASTM E648 - Critical Radiant Flux (Radiant Panel): Passes Requirements for Class I per international Building Code (IBC) 2018 & NPA 101 Life Safety Code.
2. ASTM E662 - Smoke Density: 450 is the limit established by many state, county, and/or local building and/or fire codes, but is not set as a limit for (resilient) flooring products nationwide. Thus, Smoke Density requirements for flooring products may vary from jurisdiction to jurisdiction. Consult your building inspector or fire marshal to learn more.
3. CPSIA = Consumer Product Safety Improvement Act.

