

# TEKNOFLOR®

HIGH PERFORMANCE FLOORING



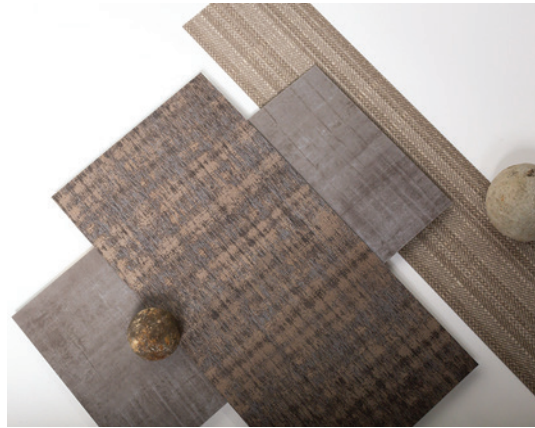
ICON TILE HPD

HIGH PERFORMANCE DESIGN • U.S.A. MADE LUXURY VINYL TILE



# VERSATILE. DURABLE. BEAUTIFUL.

Teknoflor Icon Tile HPD was designed to bring a new dimension of design to any commercial setting. The line hosts 22 skus in three distinct and beautiful visuals for countless design options. Feathered Concrete is true to its name and offers a strong industrial, yet soft aesthetic while San Tropez offers a carpet-like textile that is destined to turn heads; both in a 12" x 24" format. Denim offers a denim-like visual in a 7.08" x 47.24" plank format with bold lines and subtle hues. Constructed and designed to coordinate and accentuate with your favorite wood looks, its 2.5mm thickness will sit next to our Forest Plank HPD or our resilient sheet products without the need for a transition strip. Teknoflor Icon Tile HPD is proudly made in America.



## DURABLE AND LOW MAINTENANCE

- No Wax, No Buff and no sealers or finishes needed; easily cleaned by damp mopping or auto-scrubbing
- 2.5 mm gauge for enhanced performance in heavy traffic areas
- Maintenance savings results in investment payback in approximately two years

## ENVIRONMENTALLY FRIENDLY

- No buff floors mean no bacteria, dust or wax particles are thrown into the air during cleaning
- No odors from finishes or strippers; no wax flushed into sewer system
- Complies with REACH requirements for Substances of Very High Concern
- No antimicrobial agents added
- Made with 100% Virgin Vinyl
- Floorscore Certified

## SAFE

- ADA Compliant
- Compliant for emergency egress areas - NFPA 101

## OVERALL THICKNESS

- 2.5 mm overall thickness
- 28 mil wear layer thickness

## WARRANTY

- 20-year non-prorated commercial warranty

## APPLICATIONS

- Ideal for Healthcare, Senior Living, Retail, Corporate/Office, Hospitality, Academic and Educational Environments

ICON TILE HPD

HIGH PERFORMANCE DESIGN • U.S.A. MADE LUXURY VINYL TILE

TEKNOFLOR®



SAN TROPEZ COLLECTION (12"x24")



5301-1 Calcite



5301-2 Sand



5301-3 Garnet



5301-4 Topaz



5301-5 Copper Ore



5301-6 Granite



5301-7 Barite



5301-8 Mica



5301-9 Citrine



5301-10 Sapphire



5301-1 Calcite



FEATHERED CONCRETE COLLECTION (12"x24")



5311-2 Obsidian



5311-4 Desert Sand



5311-5 Volcanic Ash



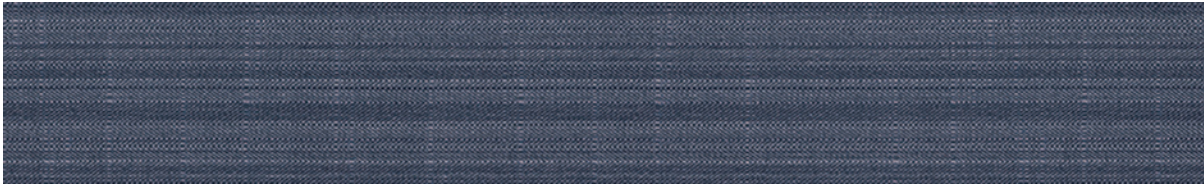
5311-6 Feldspar



5301-2 Sand • 5771-1 Lolite • 5311-5 Volcanic Ash



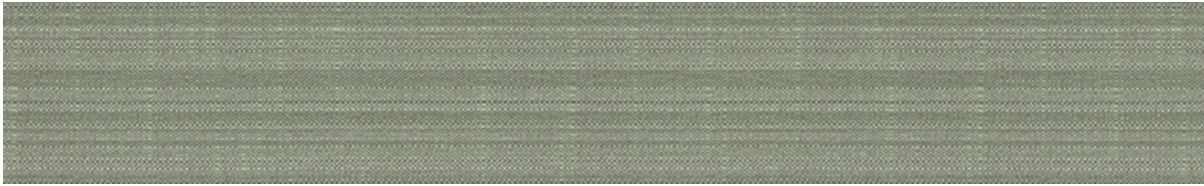
DENIM COLLECTION (7.08"x47.24")



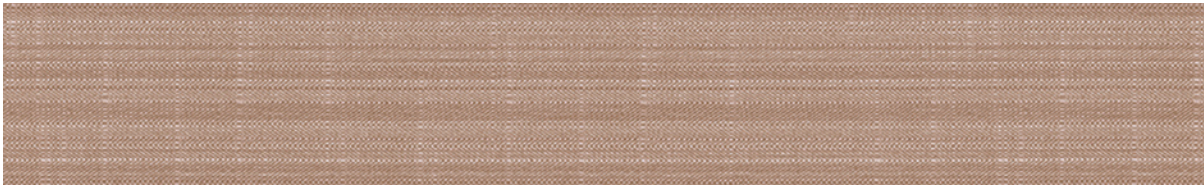
5771-1 Lolite



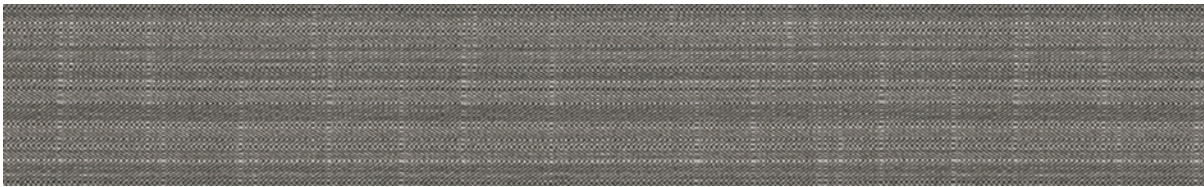
5771-2 Lapis



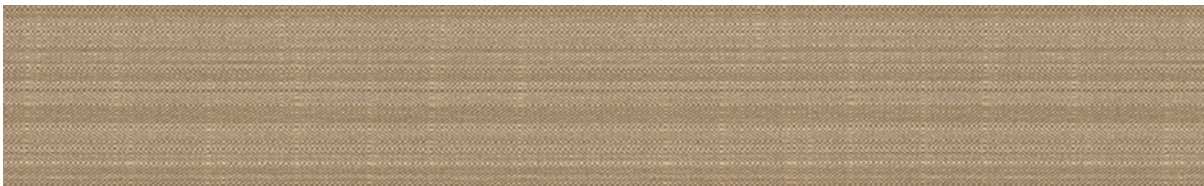
5771-3 Olivine



5771-4 Coral Sand



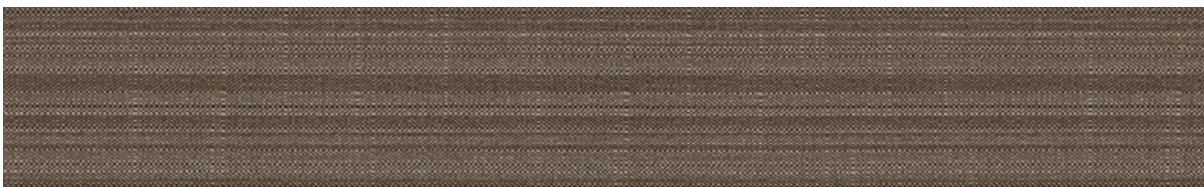
5771-5 Moonstone



5771-6 Pyrite



5771-7 Agate



5771-8 Jasper



# TEKNOFLOR® ICON TILE HPD

HIGH PERFORMANCE DESIGN • U.S.A. MADE LUXURY VINYL TILE

PRODUCT DATA			
STANDARD SPECIFICATION	Commercial - ASTM F1700	DIMENSIONS	12" x 24" TILE 7.08" X 47.24" PLANK
CLASSIFICATION	Class III, Type B	PCS / CARTON	18 (TILE) 15 (PLANK)
COMPOSITION	Virgin PVC, No outside recycled content and Phthalate Free	SQ. FT / CARTON	36 SF/Carton TILE 34.88 SF/Carton PLANK
TOP COAT	HP Urethane Coating with Ceramic Bead	WEAR LAYER THICKNESS	28 mils (0.7mm)
WARRANTY	20-Year Commercial	OVERALL THICKNESS	2.5 mm (0.098")

SAFETY & PERFORMANCE	TEST METHOD	STANDARD REQUIREMENT	RESULT
CRITICAL RADIANT FLUX	ASTM E648	Class I: $\geq 0.45$ w/cm <sup>2</sup>	Passes Requirements
SMOKE DENSITY	ASTM E662	< 450 Flaming & Non-Flaming	Passes Requirements
REACH Substances of Very High Concern (SVHC)	REACH SVHC	SVHC's tested must be < 0.1% by product weight	Passes Requirements
FLOORSORE			SCS-FS-04933 Certified
HEAVY METALS	ASTM F963	Refer to Standard	No Concern with Heavy Metal Content
PHthalates	ASTM D7823 / CPSC-CH-C1001-09.3	Refer to Consumer Product Safety Improvement Act (CPSIA)	Passes Requirements
COEFFICIENT OF FRICTION (STATIC, DRY)	ASTM D2047	$\geq 0.5$ SCOF Dry	$\geq 0.6$ SCOF Dry
CASTOR CHAIR	ISO 4918	198 lbs. Load 25,000 cycles / Rating Scale 1-5 / 5-No Change / 1 - Severe Change	25,000 cycles - 4.5 - Slight Change
BODY VOLTAGE	ANSI ESD STM97-2	Average (Abs): $\leq 2.0$ kV	Passes Requirements

MANUFACTURING & USAGE	TEST METHOD	STANDARD REQUIREMENT	RESULT
SHORT-TERM INDENTATION	ASTM F1914	Maximum: 0.012"	Surpasses Requirements
STATIC LOAD LIMIT	ASTM F970	PSI $\geq 175$ : Commercial	Surpasses Requirements ( $\geq 1,000$ PSI)
FLEXIBILITY	ASTM F137	No cracks/breaks from 0.25" (6.4mm) Mandrel	Passes Requirements
CHEMICAL RESISTANCE	ASTM F925	No more than "Slight Change"	Passes Requirements
RESISTANCE TO HEAT	ASTM F1514	Average & Max $\Delta E < 8.0$	Passes Requirements
RESISTANCE TO LIGHT	ASTM F1515	Average & Max $\Delta E < 8.0$	Passes Requirements
COMPLIANT FOR EMERGENCY EGRESS AREAS - NFPA 101			



TEKNOFLOR®