

TUF STUF™

HIGH PERFORMANCE FLOORING



NO WAX
NO BUFF
EASY TO
CLEAN

THINK AHEAD™

COMMERCIAL LUXURY VINYL TILE AND PLANK FLOORING

DESIGN FORWARD SOLUTIONS.

TUF STUF's™ THINK AHEAD™ Collection of Luxury Vinyl Tile and Plank was designed to reinvent the way we look at flooring. The collection includes vibrant and inspiring designs that are constructed to uphold the heaviest of traffic with true durability and stays true to the **“No Wax, No Buff”** features. THINK AHEAD combines exceptional beauty, durable performance and complementary designs in eight unique styles including traditional linen looks, contemporary whimsical designs and bright colorful wood patterns. THINK AHEAD is made of **100% virgin PVC vinyl**, non-phthalate plasticizers and is free of heavy metals ensuring a responsible choice for retail, hospitality, corporate, healthcare, senior living and education environments. For more information, contact your Teknoflor sales representative.

TA3524 Cheek to Cheek



TA3542 Smoke & Mirrors



TA3572 Bye Gones



TA3551 Too Short



TA3219 Skin Tight

INNOVATION & DESIGN

- Eight styles with 39 innovative designs and colors
- 28 - 18"x18" Designer Tiles and 11 - 9.25"x59.25" colorful Wood Planks
- Each pattern and colorway designed to "mix & match" to create endless design combinations

DURABLE AND LOW MAINTENANCE

- **No Wax, No Buff**; Easily cleaned by damp mopping or auto-scrubbing
- 23 mil. wear layer for enhanced performance in heavy traffic areas

ENVIRONMENTALLY FRIENDLY

- **100% Virgin PVC vinyl, non-phthalates plasticizers and free of heavy metals**
- EPA Approved Microbiocide
- No buff floors mean no bacteria, dust or wax particles thrown into the air during cleaning
- No odors from floor finishes or strippers; no wax flushed into sewer system

SAFE

- ADA Compliant
- Meets fire test standards and is suitable for use in emergency exits and corridors

OVERALL THICKNESS

- 3.0 mm with a 23 mil. wear layer

WARRANTY

- 15-year commercial warranty

APPLICATIONS

- Ideal for Retail, Hospitality, Corporate, Healthcare, Senior Living and Education Environments

GLAMOROUS



TA20322 Champagne Toast & TA20323 Paparazzi / TA3582 Colossal Cream

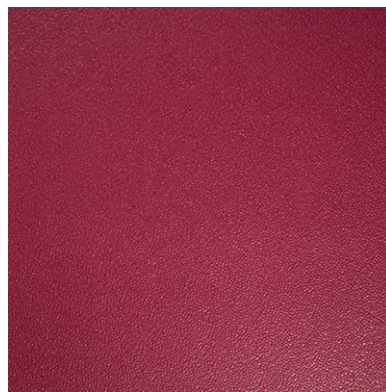


TA20322 Champagne Toast



TA20323 Paparazzi

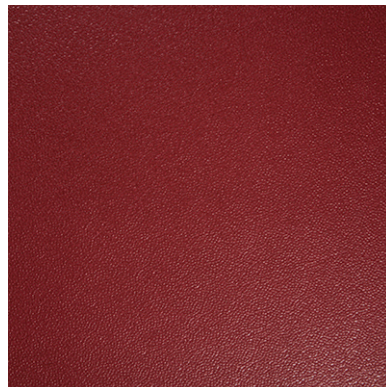
“It’s a glamorous life...
imagine a champagne toast
to celebrate your red carpet
success, followed by
jetsetting to your
private island to escape
the paparazzi and;
your starstruck fans.
Darling, you’re fabulous!”



TA20324 Starstruck



TA20326 Private Island



TA20325 Red Carpet



TA20327 Jet Set



TA3542 Smoke & Mirrors / TA3219 Skin Tight

BLING™



TA3542 Smoke & Mirrors



TA3541 All That Glitters

“It sounds fancy, because it is! Inspired by ribbons and pearls, this fabulous pattern is subtle, but far from shy. With just a hint of silver metallic, each colorway can be paired with gold, silver or any other metallic colors or details your heart desires.”

LIFE IS...™



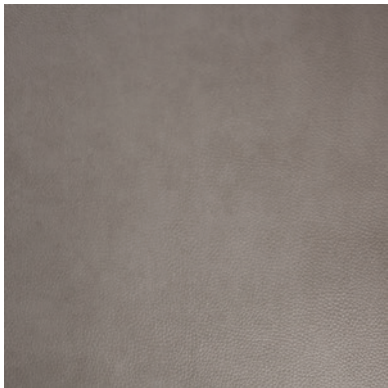
TA3551 Too Short



TA3552
Like a Box of Chocolates

“Make your life - and your installation - whatever you want them to be. This pattern can be the star of the show or a great supporting act to one of the more graphic patterns in this collection. The color names remind us of what’s important and that life is truly full of great surprises.”

SKINTASTIC



TA3219 Skin Tight



TA3218 Skin I'm In



TA32110 SPF 0



TA32111 Skinny Minny

“Chic & Luxurious like leather,
yet durable & simple to maintain?

WOW, that's Skintastic!

Now pair this with Life Is...™
for a delicious combination
of rich color & texture suitable
for any application.”



TA32110 SPF 0 & TA32111 Skinny Minny / TA3552 Like a Box of Chocolates

NOTE: Printed images are for reference only and may not reflect actual product color.

STICKS NO STONES™



TA3572 Bye Gones



TA3573 Talk to the Hand



TA3571 Plead the 5th



TA3574 No Comment

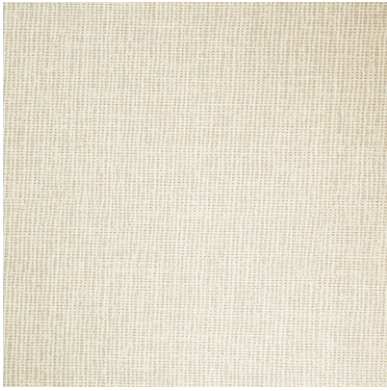
“Designed to emulate a graphic carpet tile - from the pattern to the emboss to the color selections. Sticks no Stones™ name is inspired by courage and bravery. You’ve heard the saying - here’s to standing up for what you believe in... We’ve got your back!”



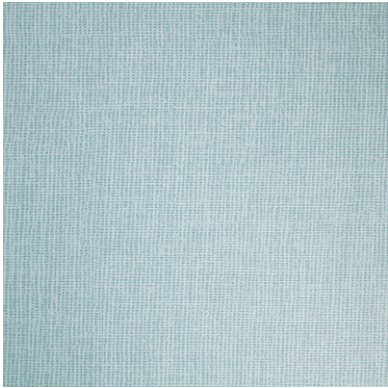
TA3573 Talk to the Hand

NOTE: Printed images are for reference only and may not reflect actual product color.

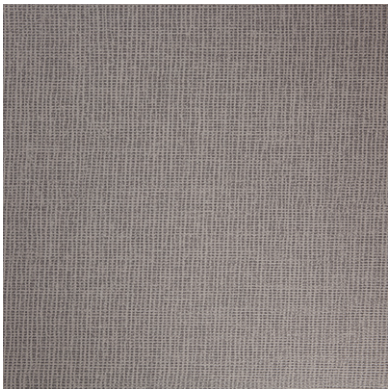
UPTIGHT



TA3532 Prim & Proper



TA3534 Wrinkle Free



TA3533 Extra Starch



TA3531 Loosen Up

“Inspired by the gauzy feel of a linen textile, Uptight is as classic as your favorite pair of linen pants... without all the wrinkles. Pair this simple pattern with any of the others in the collection and you’ll have an elegant installation that’s sure to get the attention it deserves.”



TA3532 Prim & Proper / TA3524 Cheek to Cheek

NOTE: Printed images are for reference only and may not reflect actual product color.

WALTZ™



TA3524 Cheek to Cheek



TA3522 My Way



TA3521 Unforgettable



TA3527 At Last



TA3526 Respect



TA3525 Ebony & Ivory

“Waltz’s™ fluid lines and elegant movement were inspired by the dance itself. The pattern is sophisticated and timeless as much as it is versatile. The emboss emulates a beautiful texture while the range of colors provide a multitude of options for use in any design segment. Each colorway draws inspiration from classic songs and the emotion evoked by their lyrics and sound.”



TA3521 Unforgettable / TA3533 Extra Starch

NOTE: Printed images are for reference only and may not reflect actual product color.

LIVIN' LARGE



TA3586
Ambitious Amber



TA3584
Undeniably Umber



TA3585
Brilliant Brunette



TA3587
Confident Cocoa



TA3581
Tantalizing Taupe



TA3583
Sassy Silver



TA3588
Powerplay Pink



TA3589
Successful Scarlet

NOTE: Printed images are for reference only and may not reflect actual product color.

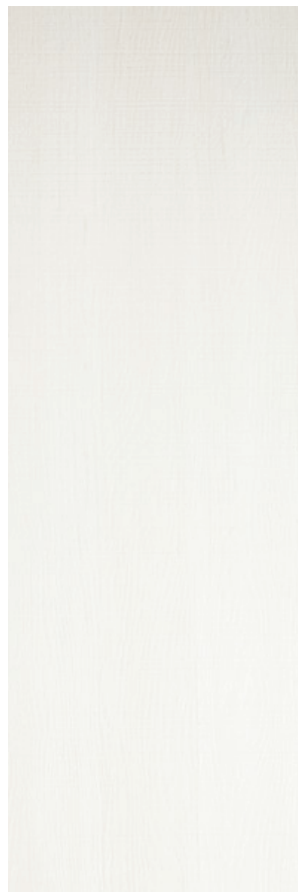
LIVIN' LARGE



TA35811
Indulgent Indigo



TA35810
Proud Peacock



TA3582
Colossal Cream

“It’s gigantic & we love it! The emboss happily blurs the lines between a wood grain and a textile, while the color collection includes a range of warm & cool neutrals as well as several show stopping, runway ready brights... all designed to make a larger than life impact.”



NOTE: Printed images are for reference only and may not reflect actual product color.

TUF STUF™ THINK AHEAD™

COMMERCIAL LUXURY VINYL TILE AND PLANK FLOORING

TECHNICAL DATA	TILE	PLANK
OVERALL THICKNESS	3.0 mm (0.118")	3.0 mm (0.118")
WEAR LAYER THICKNESS	0.55 mm (23 mils)	0.55 mm (23 mils)
DIMENSIONS:	18" x 18" (457.2 mm x 457.2 mm)	9.25" x 59.25" (235 mm x 1505 mm)
CARTONS/COVERAGE:	16 Tiles / 36 SF per carton	10 Planks / 38.1 SF per carton
WEIGHT:	38 lbs. / carton	40 lbs. / carton
WARRANTY	15 YEARS	15 YEARS

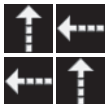
COMPOSITION	
BASE MATERIAL	Virgin PVC (No Recycled Content to avoid unintended contaminants)
PLASTICIZER	Bio-Based, Phthalate Free
TOP COAT	Ceramic Bead High Performance Infused Coating
ANTIMICROBIAL	EPA Approved Microbiocide
HEAVY METALS ANALYSIS ASTM F963	Meets Requirements - No Heavy Metal Content (< 0.01 ppm)
VOC Emissions - CHPS 01350	Meets Requirements - FloorScore Certified
HEALTH PRODUCT DECLARATION (HPD)	HPD Collaborative

FIRE SPECIFICATIONS	
CRITICAL RADIANT FLUX ASTM E648	Exceeds Requirements of $\geq 0.45 \text{ w/cm}^2$ Class I $\geq 0.8 \text{ w/cm}^2$
SMOKE GENERATION ASTM E662	Meets Requirements of < 450 Flaming & Non-Flaming
FIRE TEST DATA	Complies with NFPA 99 & NFPA 101 Requirements

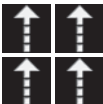
PERFORMANCE SPECIFICATIONS	
PRODUCT QUALIFICATIONS ASTM F1700	Meets or Exceeds Requirements
STATIC LOAD LIMIT ASTM F970	Exceeds Requirements of 250 psi @ $\leq 0.005"$ Residual Indentation $\geq 1,000$ psi
HEAT STABILITY ASTM F1514	Exceeds Requirements of < 8.0 ΔE Average $\Delta E \leq 1.5$
LIGHT STABILITY ASTM F1515	Exceeds Requirements of < 8.0 ΔE Average $\Delta E \leq 1.5$
CHEMICAL RESISTANCE ASTM F925	Exceeds Requirements - No Change
DIMENSIONAL STABILITY	Meets Requirements of $\leq 0.20\%$ per linear foot
STATIC COEFFICIENT OF FRICTION ASTM D2047	Exceeds Requirements of ≥ 0.5 SCOF Dry ≥ 0.6 Dry & Wet Complies with ADA Guidelines
DYNAMIC COEFFICIENT OF FRICTION ANSI B101.3	Meets acceptable range of DCOF wet traction
TABER ABRASION ASTM F510	15,000 Cycles Until Decorative Layer Affected 0.11 g Loss @ 1,000 Cycles Grit Feed & 1 KG Mass

RECOMMENDED INSTALLATION

ALL STYLES: Glamorous, Life Is™..., Skintastic, Uptight and Waltz™



1/4 TURN



MONOLITHIC

NOTE: Waltz™, Life Is...™, Bling™ and Sticks no Stones™ are covered by one or more of US Patent Nos. D732,296, D735,999 or other Patents pending.

Made of 100% Virgin PVC material free of any phthalates and heavy metals.



Schedule
GS-27F-0504H • GS-27F-0036V
GS-27F-0015V



TEKNOFLOR®

hq: 1005 South 60th Street Milwaukee, WI 53214

tel: 800.522.9166

fax: 414.944.0550

web: teknoflor.com