

TEKNOFLOR®

HIGH PERFORMANCE FLOORING



NO WAX
NO BUFF
EASY TO
CLEAN

URBANSCAPES HPD™

COMMERCIAL RESILIENT SHEET • HIGH PERFORMANCE DESIGN

CLEAN. MODERN. STYLISH.

Teknoflor® Urbanscapes HPD™ Commercial Resilient Sheet Flooring brings both stylish, modern design and superior composition to the **Teknoflor** brand of commercial sheet flooring. Carrying the brand's trademark, No Wax, No Buff features, **Urbanscapes HPD** is made of 100% virgin vinyl and without any phthalates. Used as a complementary product or as the star of the show, its versatility and beauty are sure to impress! For more information, contact your Teknoflor sales representative.



DURABLE AND LOW
MAINTENANCE

ENVIRONMENTALLY
FRIENDLY

SAFE

OVERALL THICKNESS

WARRANTY

APPLICATIONS

- **No Wax, No Buff**, and no sealers or finishes needed; easily cleaned by damp mopping or auto-scrubbing
- Thicker 2.3mm gauge for enhanced performance in heavy traffic areas
- Maintenance savings result in investment payback in approximately two years
- TekDefend™ incorporated into the wear layer which effectively inhibits bacterial growth on the flooring surface
- No buff floors mean no bacteria, dust or wax particles are thrown into the air during cleaning
- No odors from floor finishes or strippers; no wax flushed into sewer system
- Complies with REACH requirements for Substances of Very High Concern
- Made with 100% Virgin Vinyl
- Floorscore Certified
- ADA Compliant
- Approved for emergency egress areas - NFPA 101 and NFPA 99
- 2.3mm (0.091")
- 12-year commercial warranty
- Ideal for Healthcare, Senior Living, Retail, Corporate/Office, Academic and Hospitality Environments



URBANSAPES HPD™
COMMERCIAL RESILIENT SHEET • HIGH PERFORMANCE DESIGN

TEKNOFLOR®



88077 Soho



88078 Gramercy Park



88079 Astoria



88080 West Village



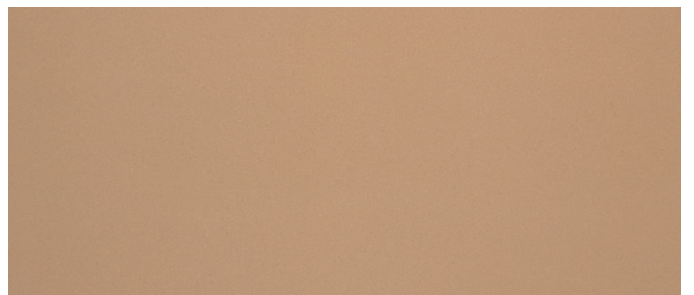
88081 Greenwich



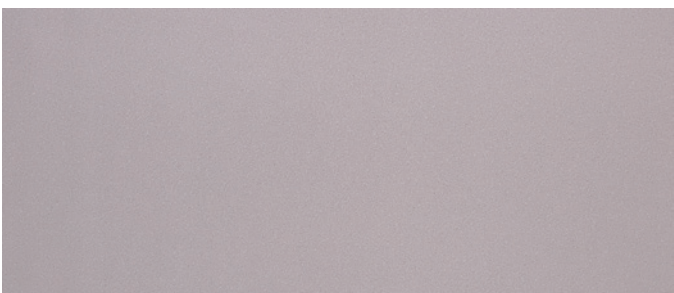
88082 Union Square



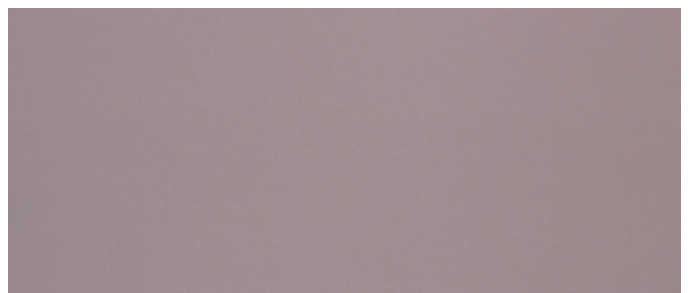
88083 Midtown



88084 East Village



88085 Chelsea



88086 Murray Hill

TEKNOFLOR® URBANSCAPES HPD™

COMMERCIAL RESILIENT SHEET • HIGH PERFORMANCE DESIGN

PRODUCT DATA		PACKAGING	
STANDARD SPECIFICATION	ASTM F1303 - Meets or exceeds requirements	DIMENSIONS	6' Wide (1.82m) x 75' Long (22.86m)
CLASSIFICATION	Type I, Grade 1	ROLL SIZE	50 SY (450 Sq. Ft.)
BACKING CLASS	Class A	WEIGHT	306 lbs.
COMPOSITION	Virgin PVC, No outside recycled content and Phthalate Free		
TOP COAT	HP Urethane Coating with Ceramic Bead		
ANTIMICROBIAL	TekDefend™		
WEAR LAYER THICKNESS	0.50 mm (20 mils or 0.020 in)		
OVERALL THICKNESS	2.3mm (0.091")		

PERFORMANCE SPECIFICATIONS	TEST METHOD	STANDARD REQUIREMENT	RESULT
CHEMICAL RESISTANCE	ASTM F925	0- No change or 1 - Slight Change	0 - No Change
HEAT STABILITY COLOR CHANGE	ASTM F1514	$\Delta E < 8.0$ avg. @ 7 days	Passes
LIGHT STABILITY COLOR CHANGE	ASTM F1515	$\Delta E < 8.0$ avg. @ 300 hrs.	Passes
SHORT TERM INDENTATION	ASTM F1914	avg. < 8.0 avg. @ 50 lbs	avg.4.4% 0.004"
STATIC LOAD LIMIT	ASTM F970	250 psi \leq 0.005" Residual Indentation	Exceeds Requirements 1,000 psi at maximum limit
FLOORSCORE	Certified		
HEAVY METALS	ASTM F963		No concern with heavy metal content
ABRASION RESISTANCE	ASTM D4060	H18 Wheel & 1 kg mass applied	35,000 cycles to see effect on design layer
PHILLIPS CASTOR CHAIR TEST	Phillips Castor Chair Test	150 lbs. Load / Rating Scale 1-5 / 5-No Change / 1 - Severe Change	20,000 Cycles-4 -Good: Slight Change With No Delamination
REACH -Substances of Very High Concern (SVHC)	Test for EU REACH Chemicals of Concern	SVHC's tested must be less than 0.1% by product weight	Passes

SAFETY PERFORMANCE	TEST METHOD	STANDARD REQUIREMENT	RESULT
STATIC COEFFICIENT OF FRICTION (SCOF)	D2047	≥ 0.5 SCOF Dry	≥ 0.6 SCOF Dry
DYNAMIC COEFFICIENT OF FRICTION (DCOF)	ANSI B101.3	Low/Acceptable/High Traction - Wet DCOF	High Traction Wet DCOF
CRITICAL RADIANT FLUX	E648	Class I: ≥ 0.45 w/cm2 Class II: ≥ 0.22 w/cm2	Class I
SMOKE GENERATION	E662	< 450 Flaming	< 450 Flaming & Non-Flaming
MICROBIAL RESISTANCE	ISO 22196 JISZ2801		$> 99.99\%$ Reduction

APPROVED FOR EMERGENCY EGRESS AREAS - NFPA 101 AND NFPA 99

