

# TEKNOFLOR®

HIGH PERFORMANCE FLOORING



AN HMTX COMMERCIAL PRODUCT



Silver Award

## SYMPHONY™ HPD

COMMERCIAL LUXURY RESILIENT SHEET • HIGH PERFORMANCE DESIGN



# INSPIRED BY HARMONY

The Teknoflor Symphony™ HPD Collection brings together an array of abstract visuals, each inspired by its own unique timbre and character, to create a harmonious whole. Like a symphony, where the strings provide the melodic line and brass adds boldness and power, each element acts together with rhythm and harmony to create an inspired collection with endless possibilities. The collection features 24 options in three unique abstract styles. “STRINGS” offers a subtle yet dynamic take on an open weave textile, while “WOODWIND” offers a tight, classic look inspired by cross-weave textiles. “BRASS” rounds out the collection as a strong abstract with unique, natural movement. Used independently or together, the Teknoflor Symphony HPD Collection is sure to inspire any commercial installation.



## DURABLE AND LOW MAINTENANCE

- No Wax, No Buff, and no sealers or finishes needed; easily cleaned by damp mopping or auto-scrubbing
- 2.3 mm gauge for enhanced performance in heavy traffic areas

## ENVIRONMENTALLY FRIENDLY

- No buff floors mean no bacteria, dust or wax particles are thrown into the air during cleaning
- No odors from adhesives, finish or strippers; no wax flushed into sewer system
- Complies with REACH requirements for Substances of Very High Concern
- No antimicrobial agents added
- Made with 100% Virgin Vinyl
- FloorScore® Certified

## SAFE

- ADA Compliant
- Compliant for emergency egress areas - NFPA 101

## OVERALL THICKNESS

- 2.3 mm overall thickness

## WARRANTY

- 12-Year Limited Commercial Warranty

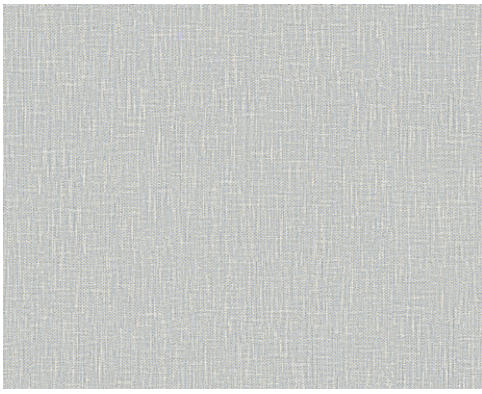
## APPLICATIONS

- Ideal for Healthcare, Senior Living, Retail, Corporate/Office, Hospitality, Academic and Educational Environments

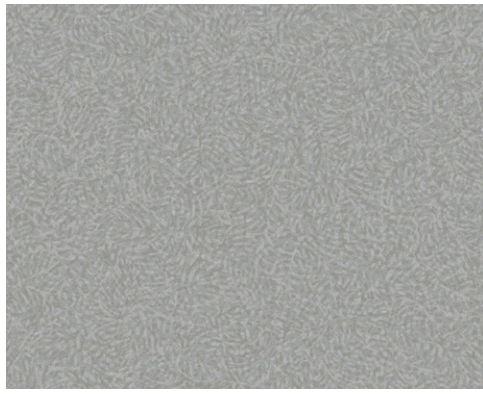
## DESIGN

- Winner of NIGHTINGALE AWARDS 2023 Silver Award for Resilient Flooring by HMTX Industries Design Team, presented by Healthcare Design

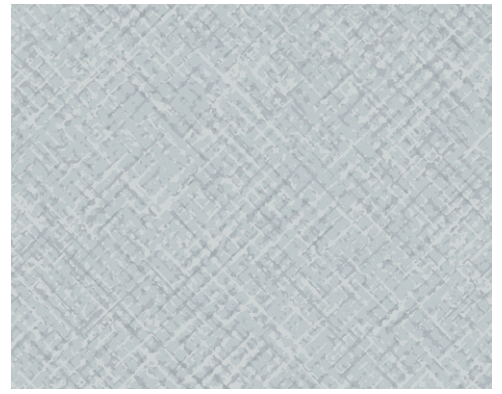




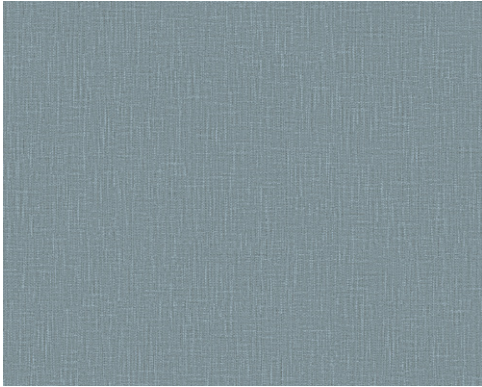
WOODWIND  
91106 CONCERTO



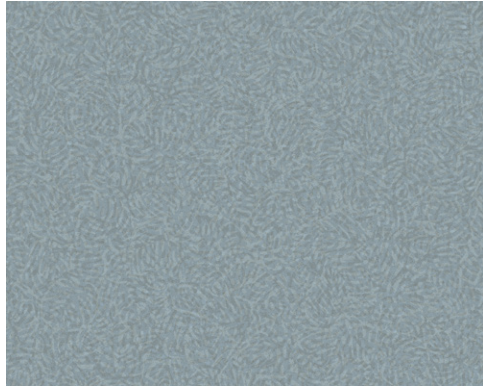
BRASS  
91206 CRESCENDO



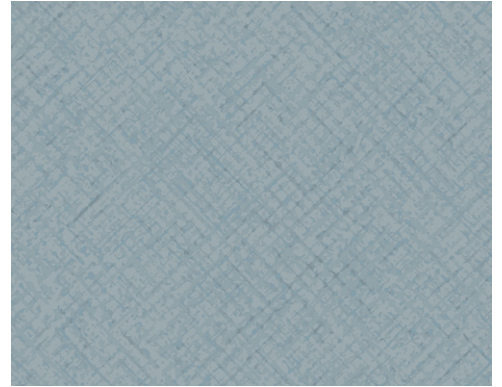
STRINGS  
91306 PHILHARMONIC



WOODWIND  
91107 HARMONY



BRASS  
91207 ALTO



STRINGS  
91307 RHYTHM



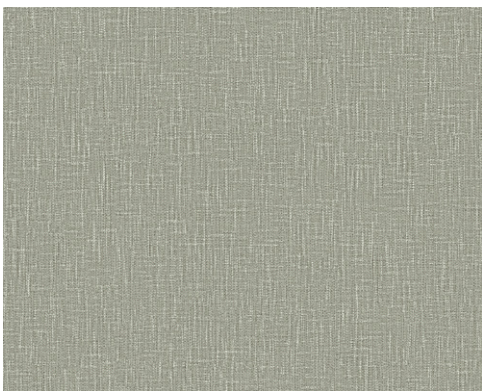
WOODWIND  
91103 PICCOLO



BRASS  
91203 TUNE



STRINGS  
91303 SOFT SUITE



WOODWIND  
91104 OBOE



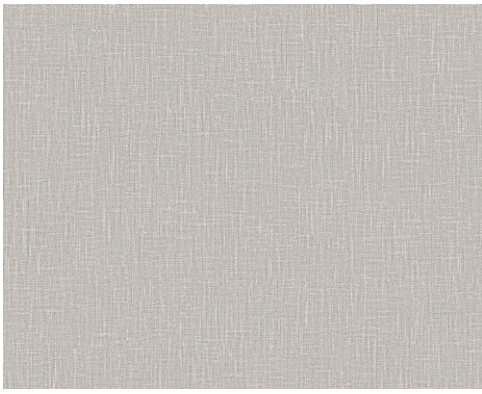
BRASS  
91204 BALLAD



STRINGS  
91304 VIOLIN

NOTE: Digital representation may differ from physical samples.





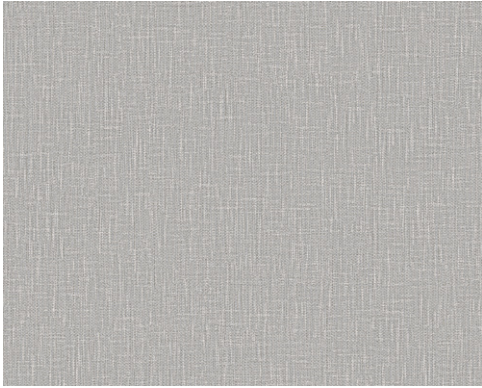
WOODWIND  
91108 MELODY



BRASS  
91208 ACAPPELLA



STRINGS  
91308 GUITAR



WOODWIND  
91105 ALLEGRO



BRASS  
91205 TRUMPET



STRINGS  
91305 SONATA



WOODWIND  
91102 MINUET



BRASS  
91202 MEASURE



STRINGS  
91302 HARP



WOODWIND  
91101 TEMPO



BRASS  
91201 FRENCH HORN



STRINGS  
91301 CELLO

NOTE: Digital representation may differ from physical samples.



# TEKNOFLOR® SYMPHONY™ HPD COLLECTION

COMMERCIAL LUXURY RESILIENT SHEET • HIGH PERFORMANCE DESIGN

PHYSICAL PROPERTIES & PACKAGING (HETEROGENEOUS SHEET VINYL - 2.3 MM GAUGE / 20 MIL WEAR LAYER)	
Construction	Heterogeneous Sheet Vinyl Flooring
Classification (ASTM F1303)	Type I, Grade 1, Class A
Use	Commercial
Thickness - Overall	2.3 mm (0.091")
Thickness - Wear Layer	0.5 mm (20 mil)
Finish	HP Urethane with Ceramic Bead
Size - Roll (W x L)	6' x 75' (1.829 m x 22.86 m)
Coverage - Roll	450 sq. ft. (50 sq yd. / 41.81 sq. m.)
Coverage - Pallet	12 Rolls/Pallet (5,400 sq ft. / 600 sq yd. / 501.7 sq. m.)
Coverage - Container	10 Pallets/Container (54,000 sq ft. / 6,000 sq yd. / 5,017 sq. m.)
Limited Warranty	12-Year Commercial

STANDARDS - MANUFACTURING & USAGE (ASTM F1303)			
STANDARD	DESCRIPTION	REQUIREMENTS	RESULTS
ASTM F410	Wear Layer Thickness	Type I, Grade 1 $\geq 0.020$ in.	Passes Requirements
ASTM F137	Flexibility	Type I: No cracks/breaks (0.25 in. mandrel)	Passes Requirements
ASTM F1914	Residual Indentation	Type I: $\leq 0.012$ in.	Passes Requirements
ASTM F970	Static Load Limit	Commercial: $\geq 175$ psi at 0.005 in.	Passes (1,500 psi at 0.005 in.)
ASTM F925	Chemical Resistance	No more than "Slight Change"	Passes Requirements
ASTM F1514	Resistance to Heat	Average $\Delta E \leq 8.0$	Passes Requirements
ASTM F1515	Resistance to Light	Average $\Delta E \leq 8.0$	Passes Requirements

STANDARDS - SAFETY & PERFORMANCE			
STANDARD	DESCRIPTION	REQUIREMENTS	RESULTS
ASTM E648	Critical Radiant Flux (Radiant Panel)	Class I: $\geq 0.45$ W/cm <sup>2</sup>	Passes Requirements <sup>1</sup>
ASTM E662	Smoke Density	Flaming & Non-Flaming $\leq 450$	Passes Requirements <sup>2</sup>
REACH SVHC 235	Substance of Very High Concern	$\leq 0.1\%$ per Substance	Passes Requirements
ASTM F963	Heavy Metals	Refer to Standard (Table I)	Passes Requirements
CPS-CH-C1001-09.4	Phthalates	Per CPSIA <sup>3</sup> $\leq 0.1\%$ per Substance	Passes Requirements
ASTM G21	Antifungal Activity	N/A (No Official Requirements)	Top Surface: 0 (No Growth)
ASTM D2047	Coefficient of Friction/Slip Resistance	N/A (No Official Requirements)	$\geq 0.6$ (Dry)
ANSI/ESD STM97.2	Body Voltage	N/A (No Official Requirements)	Average (Absolute) $\leq 2.0$ kV
ASTM D4060	Abrasion Resistance	N/A (No Official Requirements)	42,000 cycles

SCAN THE QR CODE below to download all technical documents or visit: [www.HMTXcommercial.com/technical-teknoflor](http://www.HMTXcommercial.com/technical-teknoflor)



NOTES:

1. ASTM E648 - Critical Radiant Flux (Radiant Panel): Passes Requirements for Class I per international Building Code (IBC) 2018 & NPA 101 Life Safety Code.
2. ASTM E662 - Smoke Density: 450 is the limit established by many state, county, and /or local building and/or fire codes, but is not set as a limit for (resilient) flooring products nationwide. Thus, Smoke Density requirements for flooring products may vary from jurisdiction to jurisdiction. Consult your building inspector or fire marshal to learn more.
3. CPSIA = Consumer Product Safety Improvement Act.

